

Sequestered Lumbar Disc Herniation Mimicking Spinal Neoplasm

Review began 09/10/2021
Review ended 10/03/2021
Published 10/06/2021

© Copyright 2021

Konbaz et al. This is an open access article distributed under the terms of the Creative Commons Attribution License CC-BY 4.0., which permits unrestricted use, distribution, and reproduction in any medium, provided the original author and source are credited.

Faisal Konbaz¹, Sami I. Aleissa¹, Fahad Al Helal¹, Majed Abaalkhail¹, Waleed Alrogy¹, Abrar Bin Dohaim², Nasser Albishi³

1. Department of Orthopaedic Surgery, King Abdulaziz Medical City, Ministry of National Guard Health Affairs, Riyadh, SAU 2. Department of Medicine, King Saud Bin Abdulaziz University for Health Sciences College of Medicine, Riyadh, SAU 3. Department of Pathology, King Abdulaziz Medical City, Ministry of National Guard Health Affairs, Riyadh, SAU

Corresponding author: Waleed Alrogy, walrogy@gmail.com

Abstract

Sequestered disc fragments do not have indistinctive features and often share the clinical and radiological presentation as spinal neoplasms making their diagnosis and treatment a clinical challenge.

We report a rare case of sequestered lumbar disc fragment at the level of L2-L3 in a 70-year-old male who presented to the ER complaining of six years' history of low back pain with acute onset lower extremities weakness for six days, associated with right foot drop. He was admitted for tumor workup as the MRI showed diffuse bone high signal intensity throughout the spine with a soft tissue epidural mass at L2/3, causing severe compression on the cauda equina nerve roots. The patient underwent L2-L3 decompression and fixation, mass excision, multiple open biopsies. Soft tissue biopsy of the mass revealed fibrocartilaginous tissue consistent with the intervertebral disc, while the bone biopsy was diagnostic of acute leukemia. The patient was observed postoperatively with unremarkable complications. He did well with physiotherapy, and there was a remarkable improvement of his right lower extremity power reaching 4/5.

Our case presented a rare phenomenon in which sequestered disc fragments manifested clinically and radiologically as a spinal neoplasm. Vigilant history taking and physical examination are paramount; a physician should be watchful for any red flags that may warrant further investigation such as in our case.

Categories: Neurosurgery, Oncology, Orthopedics

Keywords: sequestered, mimicking, neoplasm, herniated, lumbar disc

Introduction

Migration of herniated disc fragments is considered extremely rare given the contained anatomical barriers. These sequestered disc fragments do not have indistinctive features and often share the clinical and radiological presentation as spinal neoplasms making their diagnosis and treatment a clinical challenge [1,2]. In this paper, we review the literature and present a rare case of sequestered lumbar disc herniation mimicking spinal neoplasm resulting in acute foot drop and eventually led to diagnosing the patient with acute leukemia.

Case Presentation

This is a 70-year-old male, known to have hypertension, diabetes, benign prostatic hyperplasia, myocardial infarction on dual antiplatelets, presented to the ER complaining of six years' history of low back pain with acute onset lower extremities weakness for six days, associated with a new right foot drop. No reported history of traumas, or infections, no change in bowel and bladder habits. His examination revealed right-sided L2, L3, L4 power of 2/5, L5, S1 of 3/5. Sensation and reflexes were normal bilaterally. He was admitted for tumor workup as the MRI showed diffuse bone high signal intensity throughout the spine with a soft tissue epidural mass at L2/3 causing severe compression on the cauda equina nerve roots (Figures 1a-1e). The patient underwent L2-L3 decompression and fixation, mass excision, and open biopsies. Intraoperatively while excising the mass, grossly it looked like a sequestered disc rather than a tumor. Bone biopsy revealed bone tissue with marrow infiltration suggestive of acute myeloid leukemia (AML). Soft tissue biopsy revealed fibrocartilaginous tissue consistent with intervertebral disc material (Figure 2). The patient was observed postoperatively with no complications. He did well with physiotherapy. Three months postoperatively he was able to ambulate and perform his daily activities. Physical exam showed that he had recovered normal motor function in the right foot. He is still on a treatment program with hematology for the AML. Follow-up MRI (Figures 2a-2d) showed adequate decompression was achieved at the L2/3 level.

How to cite this article

Konbaz F, Aleissa S I, Al Helal F, et al. (October 06, 2021) Sequestered Lumbar Disc Herniation Mimicking Spinal Neoplasm. Cureus 13(10): e18529. DOI 10.7759/cureus.18529

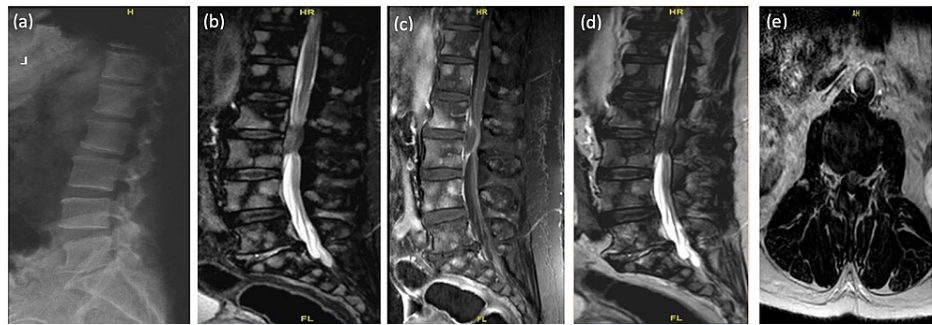


FIGURE 1: X-ray and lumbar MRI show preoperative changes.

Preoperative x-ray of the lumbar spine showing degenerative changes without osseous abnormalities (a), sagittal STIR MRI (b), sagittal T1WI MRI without contrast (c) sagittal T2WI MRI without contrast (d), and axial T2WI MRI without contrast (e) demonstrating diffuse bone signals throughout the spine indicating neoplastic process, L2-L3 level anterior epidural soft tissue component with peripheral enhancement post-contrast causing significant compression of the thecal sac and cauda equina nerve roots.

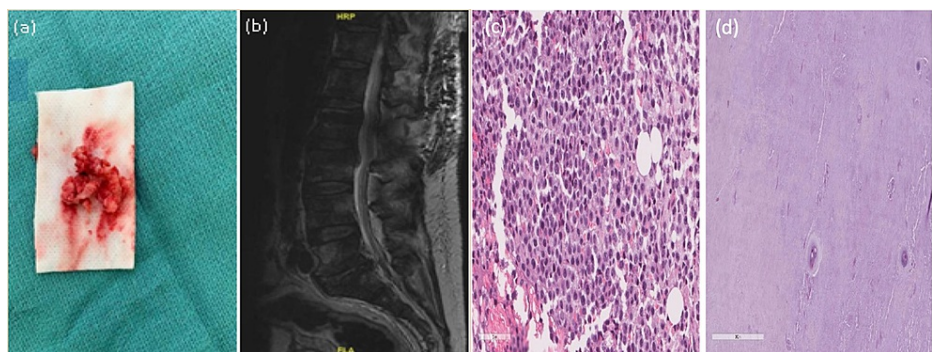


FIGURE 2: Tissue sample, postoperative lumbar MRI, and histopathology results.

Intraoperative image of L2-L3 surgically removed disc fragment (a), postoperative sagittal T2WI MRI without contrast showing adequate decompression (b), a microscopic image of the bone biopsy showing marrow infiltration and high mitotic activity consistent with AML (c), and fibrocartilaginous tissue consistent with intervertebral disc material (d).

AML - acute myeloid leukemia

Discussion

A wide variety of non-neoplastic spinal diseases including sequestered intervertebral disc herniation may present as mass lesions making preoperative diagnosis and treatment a challenge for many surgeons. One of the early cases of sequestered disc fragments was reported as protruded annulus fibrosus rotated posteriorly into the spinal canal [3]. The pathogenesis is not clearly understood yet. One hypothesis is anatomical derangement of the structures surrounding the lumbar spine such as age-related degenerative changes of lumbar discs, insufficiency of the supporting ligaments, or traumatic injuries that may facilitate sequestration of lumbar disc fragments [2,4].

We performed a PubMed and Google Scholar search of all reported studies of sequestered lumbar disc herniation published to date. The following keywords were searched: Sequestered disc herniation, lumbar disc fragment, and spinal neoplasm. We identified 38 cases of lumbar disc fragments from 12 studies (Table 1). Only cases with a preoperative diagnosis of spinal tumors confined to the lumbar region were included. Analysis of the literature revealed that the majority of cases were males accounting for 61%. The mean age was 56.06 years. Symptoms range from low back pain, muscle weakness to cauda equina syndrome [2,5]. The most common presenting symptom was cauda equina syndrome representing 41% of all symptoms. Although any spinal level might be affected, sequestered disc herniation has a predilection for the upper levels of the lumbar spine. It has been investigated that congenital, post-traumatic, postoperative, or inflammatory adhesions, forming predominantly in the lumbar spine predispose it to more sequestration of disc fragments compared to other spinal levels [2,5]. Our literature review showed that the most common location of sequestered lumbar disc herniation was at the level of L3-L4 accounting for 37% of all cases [6-15].

Study	Mean Age	Gender	Symptoms	Level	T1W1	T2W1	CE	Preoperative Diagnosis
Eysel and Herbsthofer, 2001 [7]	41	2 M; 1 F	CES, LBP	2 L3–L4; 1 L4–L5	-	-	-	Spinal tumor
Nievas and Hoellerhage, 2009 [8]	59.5	2 M; 4 F	RP, LBP, CES	1 T12–L1 2 L1–L2; 2 L4–L5; 1 L5–S1	Iso; hypo; hyper	Iso; hypo; hyper	RE	Neoplasm; schwannoma; meningioma; epidural metastasis
Demirci and Er, 2010 [9]	53	F	LBP	L2–L3	Hypo	Hypo	RE	Spinal tumor
Akhaddar et al., 2011 [4]	52	F	RP, LBP, CES	L2–L3	-	-	-	Epidural abscess/neoplasm
Sengoz et al., 2011 [10]	47.9	6 M; 2 F	CES, RP	6 L3–L4; 2 L4–L5	-	-	RE	Spinal tumor
Biasi et al., 2013 [11]	60	F	LBP	L4–L5	Hypo	Hyper	RE	Spinal tumor
Li et al., 2015 [12]	48	M	CES	L5–S1	Hypo	Hypo	RE	Spinal tumor
Ajayi et al., 2016 [13]	65	F	CES	L3–L4	Hypo	Hyper	RE	Spinal tumor
Turan et al., 2017 [14]	49.6	7 M; 2 F	CES, LBP, RP	1 L2–L3; 4 L3–L4; 3 L4–L5; 1 L5–S1	Iso; hypo	Iso; hyper	RE	Disc herniation, spinal tumor
Kim et al., 2018 [15]	76	M	RP	L2–L3	Iso	Hyper	RE	Epidural neoplasm
Afonso et al., 2018 [1]	54.5	2 M	CES, LBP, RP	L3–L4; L4–L5	Iso	Hypo; hyper	RE	Spinal tumor; meningioma
Rai et al., 2020 [2]	52.3	1 M; 2 F	CES	2 L2–L3; 1 L5–S1	Hypo	Hypo	RE	Extradural tumor, epidural mass
Present study	70	M	LBP	L2–L3	-	-	RE	Spinal neoplasm

TABLE 1: Summary of all reported cases of sequestered lumbar disc herniation mimicking spinal tumors/neoplasms.

LBP - low back pain, RP - radicular pain, CES - cauda equina syndrome, T1W1 - T1-weighted image, T2W1 - T2-weighted image, Hypo - hypointense, Hyper - hyperintense, Iso - isointense, RE - rim enhancement, - - not reported.

Contrast injection is used to differentiate between avascular disc fragments from other spinal neoplasms with the presence of rim-like peripheral enhancement. This finding is suggestive more of an inflammatory and non-neoplastic process [6]. Other conditions such as synovial cysts, epidural abscesses, or hematomas might share similar MR intensity, and rim enhancement [1,2,5,8]. The atypical presentation of sequestered disc fragments along with the past medical history of malignancy such as in our case can lead to the consideration of spinal neoplasms as one of the top differential diagnoses. As a result, unnecessary investigations for malignancy might delay diagnosis and treatment, add more cost, and most importantly may result in considerable anxiety for patients misdiagnosed with spinal neoplasms.

Conclusions

Our case presented a rare phenomenon in which sequestered disc fragments manifested clinically and radiologically as a spinal neoplasm. Vigilant history taking and physical examination are paramount; a physician should be watchful for any red flags that may warrant further investigation such as in our case. Sequestered disc fragments should be included in the differential diagnosis of patients presenting with low back pain, radiculopathy, or cauda equina syndrome.

Additional Information

Disclosures

Human subjects: Consent was obtained or waived by all participants in this study. **Conflicts of interest:** In compliance with the ICMJE uniform disclosure form, all authors declare the following: **Payment/services info:** All authors have declared that no financial support was received from any organization for the submitted work. **Financial relationships:** All authors have declared that they have no financial relationships at present or within the previous three years with any organizations that might have an interest in the submitted work. **Other relationships:** All authors have declared that there are no other relationships or activities that could appear to have influenced the submitted work.

References

1. Afonso AM, Sierra OM, de Sagredo Del Corral OLG, López AJV, González-Quarante LH, Vendrell ES, Martínez JR: Misdiagnosis of posterior sequestered lumbar disc herniation: report of three cases and review of the literature. *Spinal Cord Ser Cases*. 2018, 4:61. [10.1038/s41394-018-0100-9](https://doi.org/10.1038/s41394-018-0100-9)
2. Rai SS, Goulart CR, Lalezari S, Galgano MA, Krishnamurthy S: Dorsal migration of lumbar disc fragments causing cauda equina syndromes: a three case series and literature review. *Surg Neurol Int*. 2020, 11:175. [10.25259/SNI_197_2020](https://doi.org/10.25259/SNI_197_2020)
3. Lombardi V: Lumbar spinal block by posterior rotation of anulus fibrosus. Case report. *J Neurosurg*. 1973, 39:642-7. [10.3171/jns.1973.39.5.0642](https://doi.org/10.3171/jns.1973.39.5.0642)
4. Akhaddar A, El-Asri A, Boucetta M: Posterior epidural migration of a lumbar disc fragment: a series of 6 cases. *J Neurosurg Spine*. 2011, 15:117-28. [10.3171/2011.3.SPINE10832](https://doi.org/10.3171/2011.3.SPINE10832)
5. Theodorou DJ, Theodorou SJ, Kakitsubata Y, Papanastasiou EI, Gelalis ID: Posterior and anterior epidural and intradural migration of the sequestered intervertebral disc: three cases and review of the literature (PREPRINT). *J Spinal Cord Med*. 2020, 1-6. [10.1080/10790268.2020.1730110](https://doi.org/10.1080/10790268.2020.1730110)
6. Masaryk TJ, Ross JS, Modic MT, Boumpfrey F, Bohlman H, Wilber G: High-resolution MR imaging of sequestered lumbar intervertebral disks. *AJR Am J Roentgenol*. 1988, 150:1155-62. [10.2214/ajr.150.5.1155](https://doi.org/10.2214/ajr.150.5.1155)
7. Eysel P, Herbsthofer B: Dorsal compression of the epidural cord due to free sequestered lumbar prolapse. Diagnostic problems in magnetic resonance imaging and computed tomography. *Arch Orthop Trauma Surg*. 2001, 121:238-40. [10.1007/s004020000213](https://doi.org/10.1007/s004020000213)
8. Carvi y Nievas MN, Hoellerhage HG: Unusual sequestered disc fragments simulating spinal tumors and other space-occupying lesions. Clinical article. *J Neurosurg Spine*. 2009, 11:42-8. [10.3171/2009.3.SPINE08161](https://doi.org/10.3171/2009.3.SPINE08161)
9. Demirci A, Er U: A lumbar disc herniation mimicking spinal tumor with intra- and extradural components. *Spine J*. 2011, 11:90-1. [10.1016/j.spinee.2010.10.015](https://doi.org/10.1016/j.spinee.2010.10.015)
10. Sengoz A, Kotil K, Tasdemiroglu E: Posterior epidural migration of herniated lumbar disc fragment. *J Neurosurg Spine*. 2011, 14:313-7. [10.3171/2010.11.SPINE10142](https://doi.org/10.3171/2010.11.SPINE10142)
11. Biasi PR, Mallmann AB, Crusius PS, et al.: Sequestered lumbar disc herniation mimicking spinal tumor. *Braz Neurosurg*. 2013, 32:268-70. [10.1055/s-0038-1626029](https://doi.org/10.1055/s-0038-1626029)
12. Li K, Li Z, Geng W, Wang C, Ma J: Postdural disc herniation at L5/S1 level mimicking an extradural spinal tumor. *Eur Spine J*. 2016, 25 Suppl 1:80-3. [10.1007/s00586-015-4125-5](https://doi.org/10.1007/s00586-015-4125-5)
13. Ajayi O, Shoakazemi A, Tubbs RS, Moisi M, Rostad S, Newell DW: Atypical presentation of a sequestered posterolateral disc fragment. *Cureus*. 2016, 8:e502. [10.7759/cureus.502](https://doi.org/10.7759/cureus.502)
14. Turan Y, Yilmaz T, Gocmez C, et al.: Posterior epidural migration of a sequestered lumbar intervertebral disc fragment. *Turk Neurosurg*. 2017, 27:85-94. [10.5137/1019-5149.JTN.14712-15.1](https://doi.org/10.5137/1019-5149.JTN.14712-15.1)
15. Kim H, Kwon BS, Park JW, et al.: Posterior epidural migration of a lumbar intervertebral disc fragment resembling a spinal tumor: a case report. *Ann Rehabil Med*. 2018, 42:621-5. [10.5535/arm.2018.42.4.621](https://doi.org/10.5535/arm.2018.42.4.621)